

## Ryco Solutions, LLC

5941E 12th  
Tulsa, OK 74112  
sfinn@stashhousedistro.com  
(918) 510-9574  
Lic. #PAAA-4KSL-N4QY

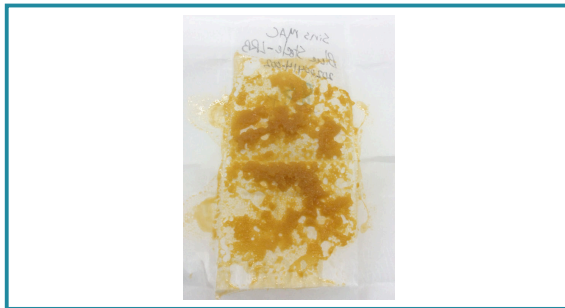
## Sample: 2004ETS1405.4380

Strain: Blue Steele Live Resin Budder  
Batch#: LHL-BLUESTEEL; Batch Size: g  
Sample Received: 04/20/2020; Report Created: 04/23/2020; Expires: 04/23/2021

Sampling: ; Environment:

## LHL-BLUESTEEL-041620

Concentrates & Extracts, Live Resin, Butane  
Harvest Process Lot: ; METRC Batch: ; METRC Sample:



### Safety

<b>Not Tested</b> Pesticides	<b>Pass</b> Microbials	<b>Pass</b> Mycotoxins
<b>Pass</b> Solvents	<b>Pass</b> Metals	<b>Pass</b> Foreign Matter

### Cannabinoids

<b>66.65%</b> Total THC	<b>0.80%</b> Total CBD	<b>NT</b> Not Tested Moisture	<b>NT</b> Not Tested Water Activity
----------------------------	---------------------------	-------------------------------------	---

Analyte	LOQ	Mass	Mass
	%	%	mg/g
THCa		71.58	715.8
Δ9-THC		3.88	38.8
Δ8-THC		ND	ND
THCV		ND	ND
CBDa		0.92	9.2
CBD		ND	ND
CBDV		ND	ND
CBN		ND	ND
CBGa		1.48	14.8
CBG		0.15	1.5
<b>Total</b>		<b>78.01</b>	<b>780.1</b>

. Total THC = THCa \* 0.877 + d9-THC. Total CBD = CBDa \* 0.877 + CBD  
LOQ = Limit of Quantitation; The reported result is based on a sample weight with the applicable moisture content for that sample; Unless otherwise stated all quality control samples performed within specifications established by the Laboratory.

Notes:

### Terpenes

 Hops	 Orange	 Cinnamon
---	---	---

Analyte	LOD	LOQ	Mass
	PPM	PPM	PPM
β-Myrcene			23565.16
δ-Limonene			21667.34
β-Caryophyllene			10908.92
α-Terpinene			9163.28
Linalool			5004.76
(-)-α-Bisabolol			3211.95
Caryophyllene Oxide			3195.37
Eucalyptol			216.46
α-Humulene			NR
α-Pinene			NR
Camphene			NR
cis-Nerolidol			NR
δ-3-Carene			NR
γ-Terpinene			NR
Geraniol			NR
Ocimene			NR
(-)-β-Pinene			NR
(-)-Guaiol			NR
(-)-Isopulegol			NR
p-Cymene			NR
Terpinolene			NR
trans-Nerolidol			NR
<b>Total</b>			<b>76933.24</b>



1717 West 33rd Street  
Edmond, OK  
(405) 216-5788  
www.expresstoxicologyservices.com  
Lic#

*Manaehe Dean*

Manaehe Dean  
Laboratory Analyst

Confident Cannabis  
All Rights Reserved  
support@confidentcannabis.com  
(866) 506-5866  
www.confidentcannabis.com



This product has been tested by Express Toxicology Services using valid testing methodologies and a quality system as required by state law. Values reported relate only to the product tested. Express Toxicology Services makes no claims as to the efficacy, safety or other risks associated with any detected or non-detected levels of any compounds reported herein. This Certificate shall not be reproduced except in full, without the written approval of Express Toxicology Services. All Oklahoma Compliance Tests are 100% performed in-house on validated state of the art instrumentation. Due to unforeseen circumstances such as equipment failure etc. outsourcing a test may be necessary in order to complete your tests in the promised time period. We only outsource to those labs who have applied for an OMMA Laboratory License, Qualifying Accreditation and proven proficiency testing. If a test is outsourced it will be notated in the notes section of the particular outsourced test.

## Ryco Solutions, LLC

5941E 12th  
Tulsa, OK 74112  
sfinn@stashhousedistro.com  
(918) 510-9574  
Lic. #PAAA-4KSL-N4QY

## Sample: 2004ETS1405.4380

Strain: Blue Steele Live Resin Budder  
Batch#: LHL-BLUESTEEL; Batch Size: g  
Sample Received: 04/20/2020; Report Created: 04/23/2020; Expires: 04/23/2021

Sampling: ; Environment:

## LHL-BLUESTEEL-041620

Concentrates & Extracts, Live Resin, Butane  
Harvest Process Lot: ; METRC Batch: ; METRC Sample:



## Pesticides

Not Tested

Analyte	LOQ	Limit	Mass	Status	Analyte	LOQ	Limit	Mass	Status
---------	-----	-------	------	--------	---------	-----	-------	------	--------



1717 West 33rd Street  
Edmond, OK  
(405) 216-5788  
www.expresstoxicologyservices.com  
Lic#

*Manaehe Dean*

Manaehe Dean  
Laboratory Analyst

Confident Cannabis  
All Rights Reserved  
support@confidentcannabis.com  
(866) 506-5866  
www.confidentcannabis.com



This product has been tested by Express Toxicology Services using valid testing methodologies and a quality system as required by state law. Values reported relate only to the product tested. Express Toxicology Services makes no claims as to the efficacy, safety or other risks associated with any detected or non-detected levels of any compounds reported herein. This Certificate shall not be reproduced except in full, without the written approval of Express Toxicology Services. All Oklahoma Compliance Tests are 100% performed in-house on validated state of the art instrumentation. Due to unforeseen circumstances such as equipment failure etc. outsourcing a test may be necessary in order to complete your tests in the promised time period. We only outsource to those labs who have applied for an OMMA Laboratory License, Qualifying Accreditation and proven proficiency testing. If a test is outsourced it will be notated in the notes section of the particular outsourced test.

## Ryco Solutions, LLC

5941E 12th  
Tulsa, OK 74112  
sfinn@stashhousedistro.com  
(918) 510-9574  
Lic. #PAAA-4KSL-N4QY

## Sample: 2004ETS1405.4380

Strain: Blue Steele Live Resin Budder  
Batch#: LHL-BLUESTEEL; Batch Size: g  
Sample Received: 04/20/2020; Report Created: 04/23/2020; Expires: 04/23/2021

Sampling: ; Environment:

## LHL-BLUESTEEL-041620

Concentrates & Extracts, Live Resin, Butane  
Harvest Process Lot: ; METRC Batch: ; METRC Sample:



## Microbials

## Pass

Analyte	Limit	Units	Status
E. Coli	0	CFU/g	Pass
Salmonella	0	ND	Pass
Staphylococcus aureus	0	ND	Pass
Yeast & Mold	0	ND	Pass

Microbials on COA's will always display as complete until comprehensive regulations are promulgated by the OMMA.



1717 West 33rd Street  
Edmond, OK  
(405) 216-5788  
www.expresstoxicologyservices.com  
Lic#



Manaeh Dean  
Laboratory Analyst

Confident Cannabis  
All Rights Reserved  
support@confidentcannabis.com  
(866) 506-5866  
www.confidentcannabis.com



This product has been tested by Express Toxicology Services using valid testing methodologies and a quality system as required by state law. Values reported relate only to the product tested. Express Toxicology Services makes no claims as to the efficacy, safety or other risks associated with any detected or non-detected levels of any compounds reported herein. This Certificate shall not be reproduced except in full, without the written approval of Express Toxicology Services. All Oklahoma Compliance Tests are 100% performed in-house on validated state of the art instrumentation. Due to unforeseen circumstances such as equipment failure etc. outsourcing a test may be necessary in order to complete your tests in the promised time period. We only outsource to those labs who have applied for an OMMA Laboratory License, Qualifying Accreditation and proven proficiency testing. If a test is outsourced it will be notated in the notes section of the particular outsourced test.

## Ryco Solutions, LLC

5941E 12th  
Tulsa, OK 74112  
sfinn@stashhousedistro.com  
(918) 510-9574  
Lic. #PAAA-4KSL-N4QY

## Sample: 2004ETS1405.4380

Strain: Blue Steele Live Resin Budder  
Batch#: LHL-BLUESTEEL; Batch Size: g  
Sample Received: 04/20/2020; Report Created: 04/23/2020; Expires: 04/23/2021

Sampling: ; Environment:

## LHL-BLUESTEEL-041620

Concentrates & Extracts, Live Resin, Butane  
Harvest Process Lot: ; METRC Batch: ; METRC Sample:



## Mycotoxins

Pass

Analyte	LOQ	Limit	Units	Status
	PPB	PPB	PPB	
Ochratoxin A	10.00	20.00	ND	Pass
Total Aflatoxins	10.00	20.00	ND	Pass

LOQ = Limit of Quantitation; The reported result is based on a sample weight with the applicable moisture content for that sample; Unless otherwise stated all quality control samples performed within specifications established by the Laboratory.



1717 West 33rd Street  
Edmond, OK  
(405) 216-5788  
www.expresstoxicologyservices.com  
Lic#



Shelby Truax  
Laboratory Analyst

Confident Cannabis  
All Rights Reserved  
support@confidentcannabis.com  
(866) 506-5866  
www.confidentcannabis.com



This product has been tested by Express Toxicology Services using valid testing methodologies and a quality system as required by state law. Values reported relate only to the product tested. Express Toxicology Services makes no claims as to the efficacy, safety or other risks associated with any detected or non-detected levels of any compounds reported herein. This Certificate shall not be reproduced except in full, without the written approval of Express Toxicology Services. All Oklahoma Compliance Tests are 100% performed in-house on validated state of the art instrumentation. Due to unforeseen circumstances such as equipment failure etc. outsourcing a test may be necessary in order to complete your tests in the promised time period. We only outsource to those labs who have applied for an OMMA Laboratory License, Qualifying Accreditation and proven proficiency testing. If a test is outsourced it will be notated in the notes section of the particular outsourced test.

## Ryco Solutions, LLC

5941E 12th  
Tulsa, OK 74112  
sfinn@stashhousedistro.com  
(918) 510-9574  
Lic. #PAAA-4KSL-N4QY

## Sample: 2004ETS1405.4380

Strain: Blue Steele Live Resin Budder  
Batch#: LHL-BLUESTEEL; Batch Size: g  
Sample Received: 04/20/2020; Report Created: 04/23/2020; Expires: 04/23/2021

Sampling: ; Environment:

## LHL-BLUESTEEL-041620

Concentrates & Extracts, Live Resin, Butane  
Harvest Process Lot: ; METRC Batch: ; METRC Sample:



## Residual Solvents

Pass

Analyte	LOQ	Limit	Mass	Status
	PPM	PPM	PPM	
Acetone		1000.000	ND	Pass
Benzene		2.000	ND	Pass
Butane		1000.000	ND	Pass
Isopropanol		1000.000	ND	Pass
n-Hexane		60.000	ND	Pass
Pentane		1000.000	ND	Pass
Propane		1000.000	ND	Pass
Toluene		180.000	ND	Pass
Xylenes		430.000	ND	Pass

LOQ = Limit of Quantitation; The reported result is based on a sample weight with the applicable moisture content for that sample; Unless otherwise stated all quality control samples performed within specifications established by the Laboratory.



1717 West 33rd Street  
Edmond, OK  
(405) 216-5788  
www.expresstoxicologyservices.com  
Lic#



Dylan Burch  
Production Manager

Confident Cannabis  
All Rights Reserved  
support@confidentcannabis.com  
(866) 506-5866  
www.confidentcannabis.com



This product has been tested by Express Toxicology Services using valid testing methodologies and a quality system as required by state law. Values reported relate only to the product tested. Express Toxicology Services makes no claims as to the efficacy, safety or other risks associated with any detected or non-detected levels of any compounds reported herein. This Certificate shall not be reproduced except in full, without the written approval of Express Toxicology Services. All Oklahoma Compliance Tests are 100% performed in-house on validated state of the art instrumentation. Due to unforeseen circumstances such as equipment failure etc. outsourcing a test may be necessary in order to complete your tests in the promised time period. We only outsource to those labs who have applied for an OMMA Laboratory License, Qualifying Accreditation and proven proficiency testing. If a test is outsourced it will be notated in the notes section of the particular outsourced test.

## Ryco Solutions, LLC

5941E 12th  
Tulsa, OK 74112  
sfinn@stashhousedistro.com  
(918) 510-9574  
Lic. #PAAA-4KSL-N4QY

## Sample: 2004ETS1405.4380

Strain: Blue Steele Live Resin Budder  
Batch#: LHL-BLUESTEEL; Batch Size: g  
Sample Received: 04/20/2020; Report Created: 04/23/2020; Expires: 04/23/2021

Sampling: ; Environment:

## LHL-BLUESTEEL-041620

Concentrates & Extracts, Live Resin, Butane  
Harvest Process Lot: ; METRC Batch: ; METRC Sample:



## Heavy Metals

Pass

Analyte	Mass	LOQ	Limit	Status
	PPM	PPM	PPM	
Arsenic	ND	0	0	Pass
Cadmium	ND	0	0	Pass
Lead	ND	0	1	Pass
Mercury	ND	0	0	Pass

LOQ = Limit of Quantitation; The reported result is based on a sample weight with the applicable moisture content for that sample; Unless otherwise stated all quality control samples performed within specifications established by the Laboratory.



1717 West 33rd Street  
Edmond, OK  
(405) 216-5788  
www.expresstoxicologyservices.com  
Lic#



Dylan Burch  
Production Manager

Confident Cannabis  
All Rights Reserved  
support@confidentcannabis.com  
(866) 506-5866  
www.confidentcannabis.com



This product has been tested by Express Toxicology Services using valid testing methodologies and a quality system as required by state law. Values reported relate only to the product tested. Express Toxicology Services makes no claims as to the efficacy, safety or other risks associated with any detected or non-detected levels of any compounds reported herein. This Certificate shall not be reproduced except in full, without the written approval of Express Toxicology Services. All Oklahoma Compliance Tests are 100% performed in-house on validated state of the art instrumentation. Due to unforeseen circumstances such as equipment failure etc. outsourcing a test may be necessary in order to complete your tests in the promised time period. We only outsource to those labs who have applied for an OMMA Laboratory License, Qualifying Accreditation and proven proficiency testing. If a test is outsourced it will be notated in the notes section of the particular outsourced test.